

WinTV-HVR-955Q

Quick Installation Guide for Windows

Contents of the package

- WinTV-HVR-955Q NTSC/ATSC/QAM receiver
- USB extension cable
- AV cable (on some models)
- Portable TV antenna (on some models)
- Credit card size remote control (on some models)
- WinTV v10 application for Windows (download with included Activation Code)

Installation of the WinTV-HVR-955Q device

Locate a free USB 2.0 or USB 3.0 port (normally located at the side or back on the laptop or desktop). Plug the WinTV-HVR-955 into the USB port. The **USB extension cable** can be used to position the WinTV-HVR-955 away from your USB slot.

Note: we do not recommend connecting via a USB Hub.

Plug an antenna for ATSC digital TV reception, or either cable TV or a TV antenna for analog/QAM TV reception, into the TV connector on WinTV-HVR-955Q.

Note: We recommend using a roof top antenna during the first time installation. This will provide better signal quality than a portable antenna.

1

Indicator LEDs

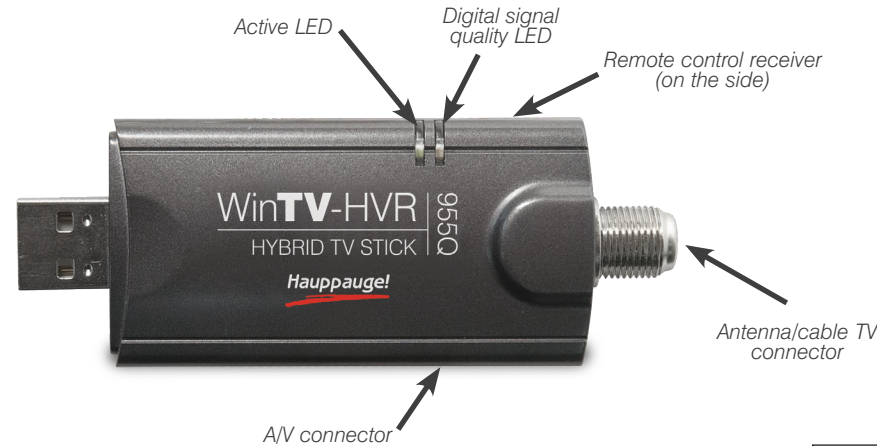
The Active LED will be lit when the WinTV-HVR-955 has been activated by Windows (device driver is loaded). The Digital signal quality LED is green when you are tuned to a strong digital TV signal, yellow when tuned to a moderate TV signal and off when there is no (or a weak) TV signal.

Connecting an external A/V source

You can also connect sources via the A/V input cable (available on some models of WinTV-HVR-955Q).

Plug the A/V input cable into the small connector on the side of the WinTV-HVR-955Q. Connect your A/V source using either the Composite or S-Video connection and the audio jacks.

To enable the external A/V source in the WinTV application, see the section entitled **“External audio/video sources”** below.



2

Note: if you complete the channel scan and no channels are detected, you can try the following: check your antenna connections, reposition your antenna, add an antenna signal booster, or get a larger antenna. Information on rescanning for TV channels can be found here: www.hauppauge.com/rescan

External audio/video sources

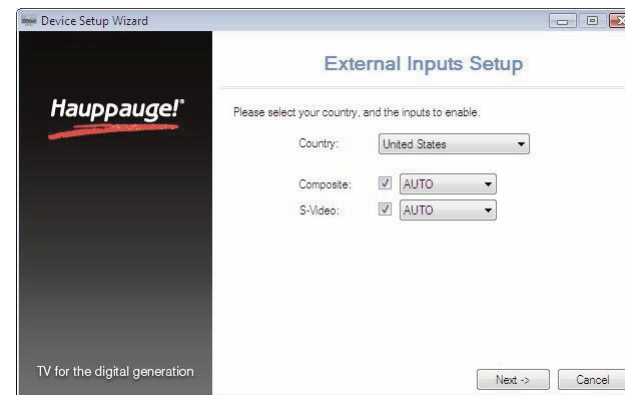
You can bring video into the WinTV-HVR-955Q from an external audio/video source such as a cable TV or satellite set top box.

In the **Device Setup Wizard**, select **External Inputs** and click **Next**.

You will be presented with the option to add a **Composite** and an **SVideo** input.

Please select your country (if not correct) and click **Next**.

If you wish to connect a source not normally designed for operation in your country, you can configure the Video Format manually from the drop down list. Change the value from “AUTO”. NTSC is the broadcast format used in North America. Pal BGHIDK is the commonly used format in Europe.



5

Installing the WinTV v10 application for Windows

Note: Please disable your antivirus software for the duration of the software installation. We find that sometimes antivirus apps block the temporary folders needed for the installation of WinTV

Note: An Internet connection is required for download and software activation.

You will find the website and directions on the **WinTV v10 Download and Activation code** card along with the **Activation code** for WinTV v10.

The WinTV v10 download can be found here:

www.hauppauge.com/wintv10

Step 1:

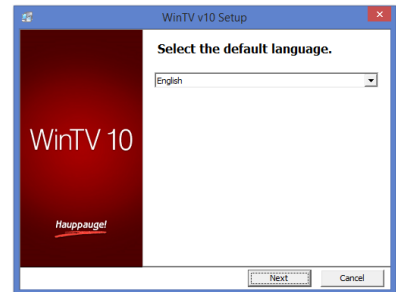
Download the WinTV v10 installer by clicking the download button. The WinTV v10 Installer is normally saved in your **Download folder**

Step 2:

Run **wintv10setup** from the Download folder on your PC. Halfway through the installation, a message will pop up asking for you to enter the Activation Code.

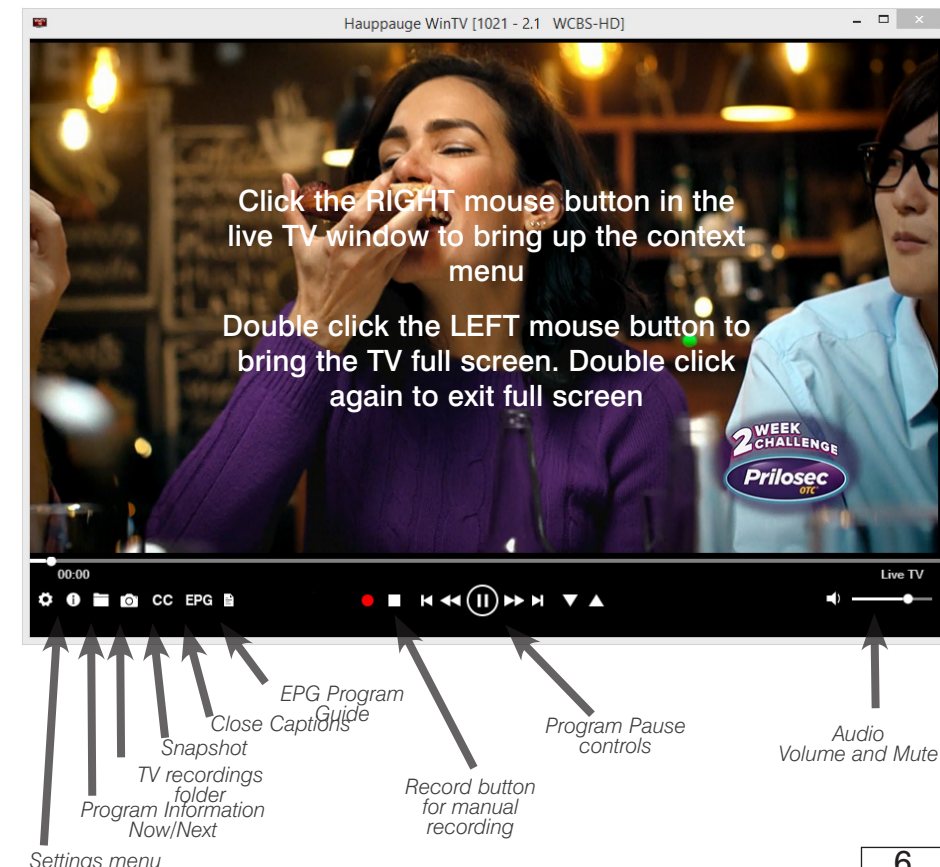
Step 3:

At the **Activation required** screen, click on **Enter Activation code** and enter the activation code which was printed on the **WinTV v10 Download and Activation code** card. You do not need to enter the dashes, and you can use



3

Using the WinTV v10 application



6

upper or lower case characters.

Step 4:

When the installation is complete, you will find two new icons on your Windows desktop: the **WinTV application** icon and the **WinTV Advanced Options** icon. The WinTV Advanced Options icon, when clicked, has a number of useful WinTV v10 utilities such as to Empty EPG, Erase channel database and others.

Double click on the **WinTV icon** and the WinTV application will run. **On the first run of WinTV, it will automatically go through the TV source selection and WinTV will scan for channels.**

Set the check mark according to the connected signal and click on **Next**.

If you receive ATSC (Digital ATSC) via antenna or clear QAM (Digitqal QAM) via cable, set the check mark according to the connected signal and click on **Next**.

If you have connected an external video source using the included A / V cable, select “External inputs (Composite / S-Video)”.



4

Click **Next** to start the search.

Stations found are listed during the search.

When the search is complete, click **Next** to save the channels found.

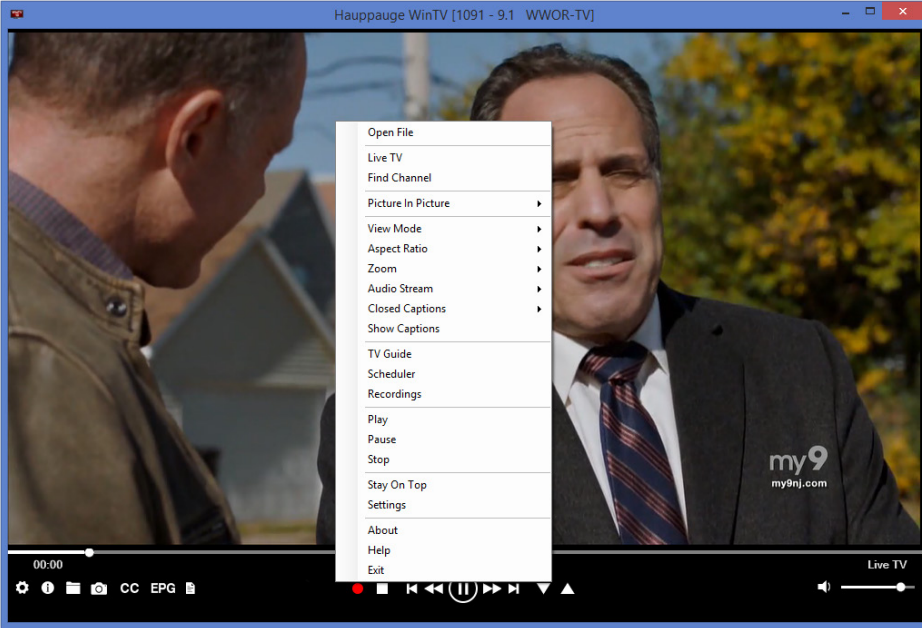
Settings menu

The WinTV v10 Menu

The Main WinTV Menu (context menu)

Right-click inside the TV window or click on the **menu button** on the WinTV toolbar to display the **Context Menu**. The following options are available.

«**Open file**» Open up a TV recording or other video file for playback in the WinTV window.



7

To schedule a new recording, click on the Add button. You will need to select the channel, set the start time, duration etc. and confirm with a click on the Record button.

Note: *The WinTV application does not have to be running for a scheduled recording to work, but your PC will need to be either turned on or in Standby (not Hibernate). All scheduled recordings are performed in the background by the task "WinTVRec.exe". If a recording is started while you are watching live TV, WinTV will display the TV program being recorded.*

«**Settings**» Click the Settings button to open the **WinTV Settings** window.

«**Settings**» **General:** Select the language and the preferred Audio and subtitle languages. You can also specify the video renderer to be used and the TV shape.

«**Settings**» **Capture:** Specify where the recordings, pause files and snapshots will be stored.

«**Settings**» **Devices:** To rescan for TV channels, select the device you wish to configure from the list and click on Tuner Setup.

«**Settings**» **All Channels:** You can enable or disable the listing of channels with the **select box in the first column**. The Context menu allows you to select all channels, to delete the selected channel(s), to watch the selected channel or to display details about the channel.

«**Settings**» **Favorites:** Here you can define groups of your favorite channels.

«**Settings**» **Advanced Options:** From this menu you have options for:

- Automatically starting TV when WinTV v10 opens
- Disable the Now/Next channel information
- Disable any On Screen Display graphics
- Auto convert the standard .TS recordings to the .mpg format

«Settings» Decoders

Third Party Decoders allows you to test and use third party video/audio decoders. (The use of third party decoders is an unsupported feature but helps in some situations.)

10

«**Find Channel**» This brings up the Channel List. Click on a channel entry to select this channel for watching. To filter the channel list, type in a channel name (or a part of the name). Click on the Pin-Button to permanently show the channel list. The channel list will also be displayed if you just enter any character (a - z) in live TV mode.

«Picture in Picture»

If you have two WinTV-HVR-955Qs plugged in to your PC, there are four ways to use the two tuners:

1. Recording up to two overlapping

TV programs: you can schedule up to two overlapping TV shows from the TV Guide or manually. Using the dual tuners is automatic.

2. Watch one live program while another program is being recorded:

you can watch one live program in WinTV v10 and continue watching, when a scheduled recording takes place. The free tuner is used automatically for the recording.

3. Watch with Picture-in-Picture: in **Picture in Picture**, click **Two Tuner**. You will now see the WinTV window with a Picture-in-Picture window. to select a channel, in **Picture in Picture** select **Find Channel** and choose your channel.

4. Watch two separate WinTV windows, each with their own TV channel:

in **Picture in Picture**, click **Dual Window**. You will now have two completely separate windows, each with their own TV program.

«View Mode»

Normal, No Title and Fullscreen are available. In **Normal** view all control elements and

8

Infrared Remote Control

Preparations

- Make sure the batteries are inserted into the infrared remote control.

Use of the infrared remote control

The software for the remote control is loaded via the Autostart folder in the Windows Start menu when Windows starts ("AutoStart IR"). When ir.exe is loaded, you will see a small black remote control in the information area in the Windows task bar.

Notes on Using the Remote Control

- When using the remote control, point it towards the end of the IR Receiver cable.
- The WinTV application only responds to the remote control if it is the active window.
- To restart the IR receiver program, run the "Restart IR" shortcut in the Start menu or in the WinTV Advanced Options folder on your Desktop.

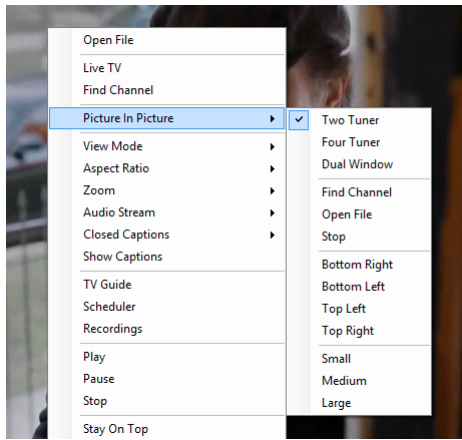
What is ATSC and QAM digital TV

ATSC digital TV is over-the-air digital TV for North America. ATSC digital TV typically requires an antenna for reception, and is currently broadcast in 200 cities, with over 1500 TV stations.

ATSC digital TV is transmitted in several resolutions, from "standard definition" which is similar to cable TV, up to high definition which has about 16 times the resolution of normal cable TV. In any resolution, ATSC digital TV gives sharper pictures than analog cable TV and near CD quality sound.

Clear QAM TV channels are digital cable TV channels which are broadcast on cable TV "in the clear". These digital cable TV channels are broadcast in various resolutions, from standard definition up to high definition. Please check with your local cable TV operator on the availability of clear QAM TV channels.

11



buttons are visible. In the **No Title** view only the TV image is shown. In the **Fullscreen** view the TV image fills the whole screen. You can also switch between these views by double clicking inside the TV window, or by pressing <Ctrl> W on the keyboard.

«Audio Stream»

If the current TV broadcast offers more than one audio stream / language, you can select the other stream / language here.

«Show Captions»

Select this option to display **close captions**. If close captions are available, the On Screen Display message "Captions: On" is shown for a few seconds, and close captions are displayed. If close captions are not available, the OSD message does not appear. To turn off close captions, select "Show Captions" again.

Note: *captions are recorded when making a WinTV recording. When playing back a .ts recording, captions can be displayed by selecting Show Captions.*

«Stay On Top»

If enabled, the WinTV application window will remain in view over any other application windows, even if it is not selected. To turn on, select "Stay On Top". To turn off, select this option again.

«TV Guide»

Some ATSC digital TV channels transmit Electronic Program Guide information (EPG). This information is collected and displayed in the TV Guide window. Click a program title with your mouse to see more details about the entry. To record a program, click on Record in the details view. The scheduled recording is added to the Scheduler window. To rescan all frequencies for TV Guide information, click on Update EPG.

«**Scheduler**» The Scheduler allows you to record a TV program at a certain date and time on the specified channel. It lists all scheduled recordings added by the TV Guide as well as any manual recordings that have been set. From here you can Edit or Cancel (delete) existing schedule entries.

9

WinTV Keyboard Commands

- | | |
|--|-------------------------------|
| Next Channel = Plus (+) | Skip Back = Ctrl + R |
| Previous Channel = Minus (-) | Live (now) = Ctrl + C |
| Last channel (the channel you were tuned to previously): Alt P | Full Screen = Ctrl + W |
| Increase Volume = Page up | Subtitles on / off = Ctrl + S |
| Decrease Volume = Page down | WinTV Settings = Ctrl + I |
| Show Channel List = Ctrl + L | Start TV = Alt + T |
| Mute = Ctrl + M | Last Channel = Alt + P |
| Display Info = Ctrl + O | Start Recording = Alt + R |
| Stream Details = Ctrl + D | Stop = Alt + S |
| Teletext = Ctrl + T | Open File = Alt + F |
| Pause Video = Ctrl + Q | Make Snapshot = Space Bar |
| Play = Ctrl + P | Change Aspect Ratio = Ctrl + |
| Skip Ahead = Ctrl + F | Exit Full Screen = Esc |

Troubleshooting

How Can I Rerun the Channel Scan?

To scan for channels again, in the main WinTV window click on the **gear icon** (lower left hand corner of WinTV), then select the **"Devices"** tab, click on the **WinTV-HVR-955Q** entry and click on **"Tuner Setup"**.

Click **Next** and **Next** to start the channel scan.

A video showing how to do the channel scan can be found here:

www.hauppauge.com/rescan

12