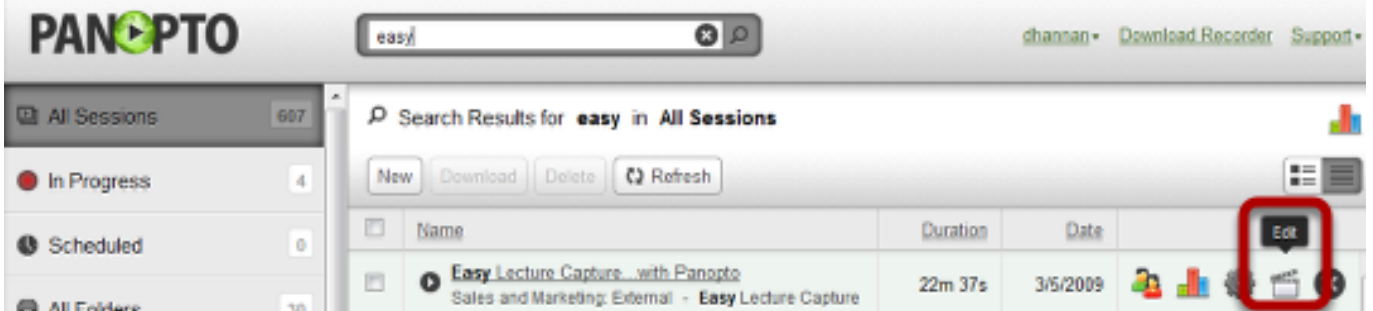


Advanced Editor Usage

Log in and click the edit icon



How to navigate/seek in the recording

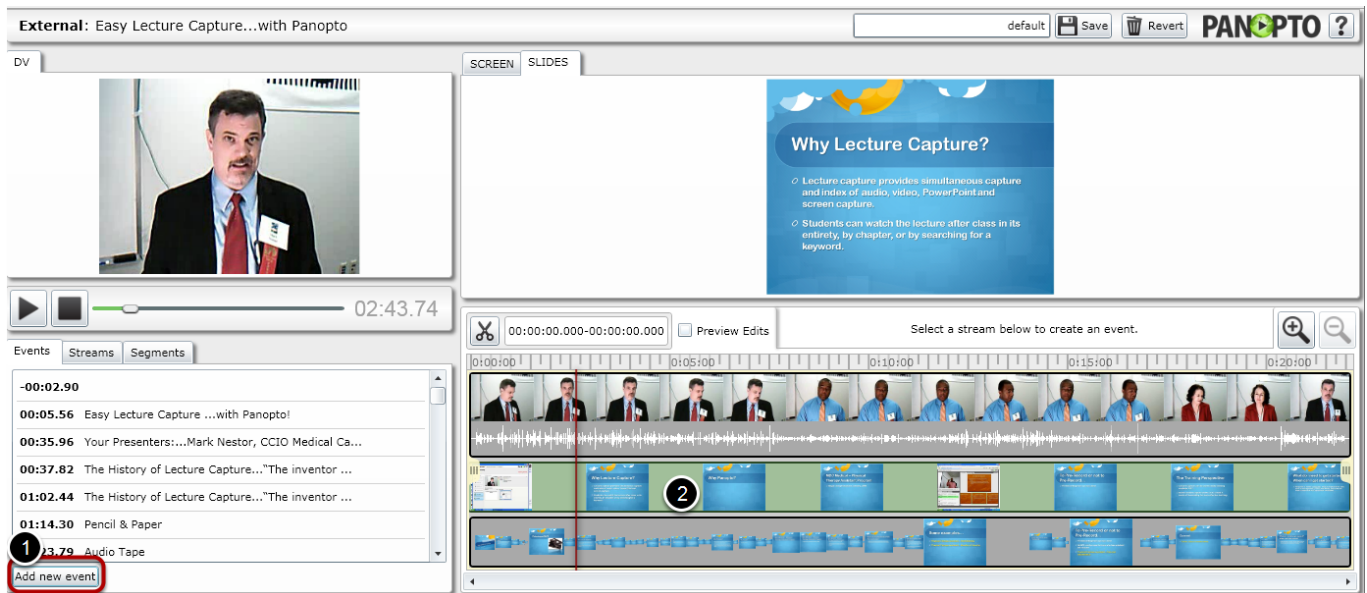
1. Clicking anywhere in the timeline will seek the video to that point
2. Click on any of the events will seek the video to where that event starts



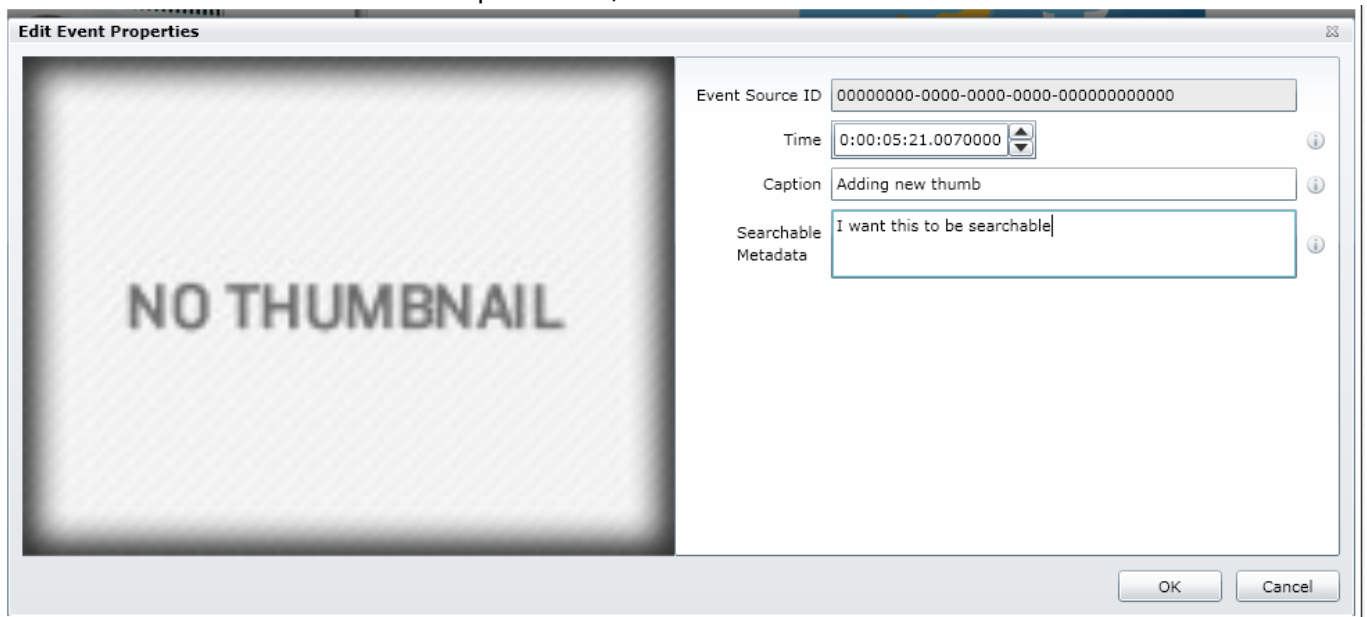
How to Insert a new thumbnail

****Thumbnails can only be inserted into screencapture & secondary video streams****

1. Click Add new event
2. Click where you want the thumbnail to be inserted

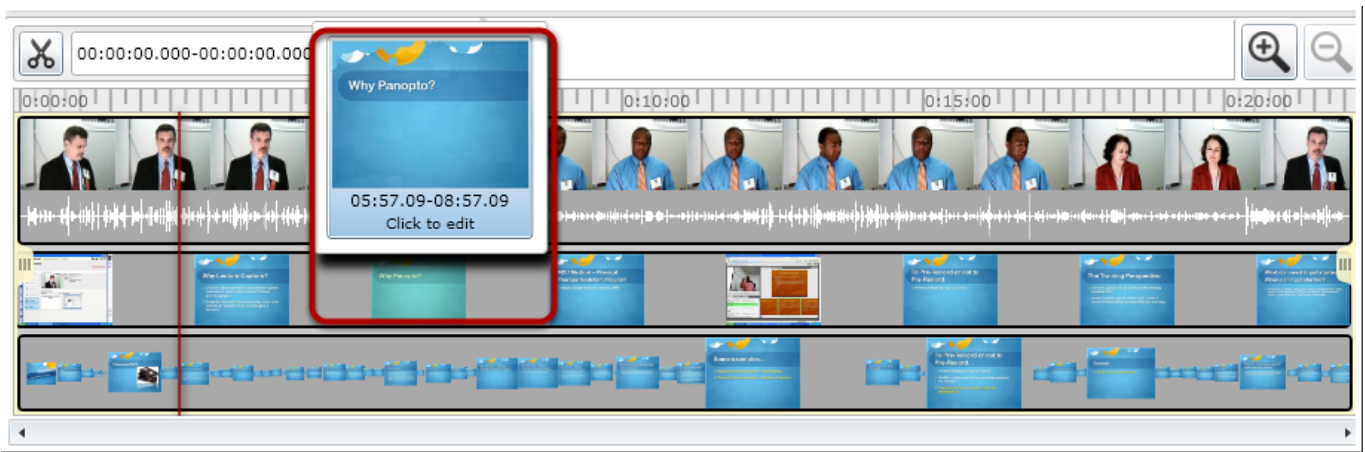


3. Type in the new caption name, enter any searchable metadata and click OK (the thumbnail image will be created after the session re-processes)

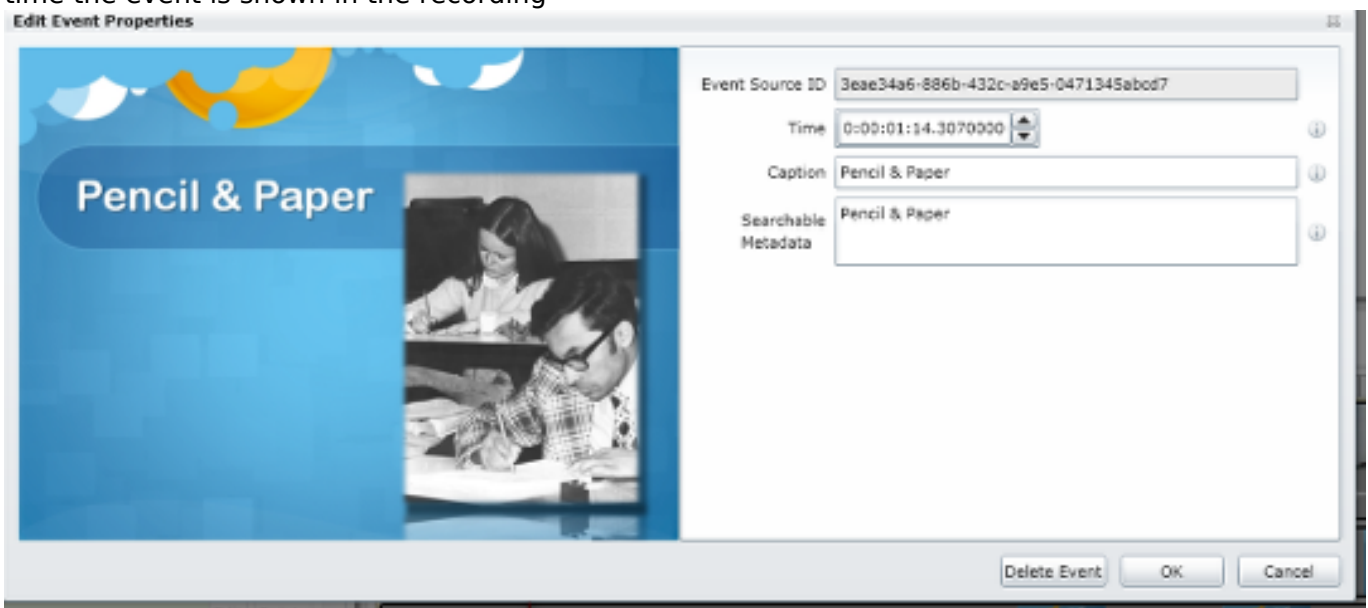


How to edit a thumbnail/event

Hover the mouse over the thumbnail you wish to modify and then click on "Click to edit"



You can modify the caption, change searchable metadata, delete the entire event and change the time the event is shown in the recording



Additional information about thumbnail generation


1. For slides (PowerPoint or Keynote): They are generated every time a slide advances
2. For secondary video (screencap, secondary camera): They are automatically generated every three minutes. You can add in events to supplement the three minute gap in secondary video.

How to modify the start time of a stream

1. Click the Streams tab
2. Click Edit on the stream you wish to modify

External: Easy Lecture Capture...with Panopto

DV



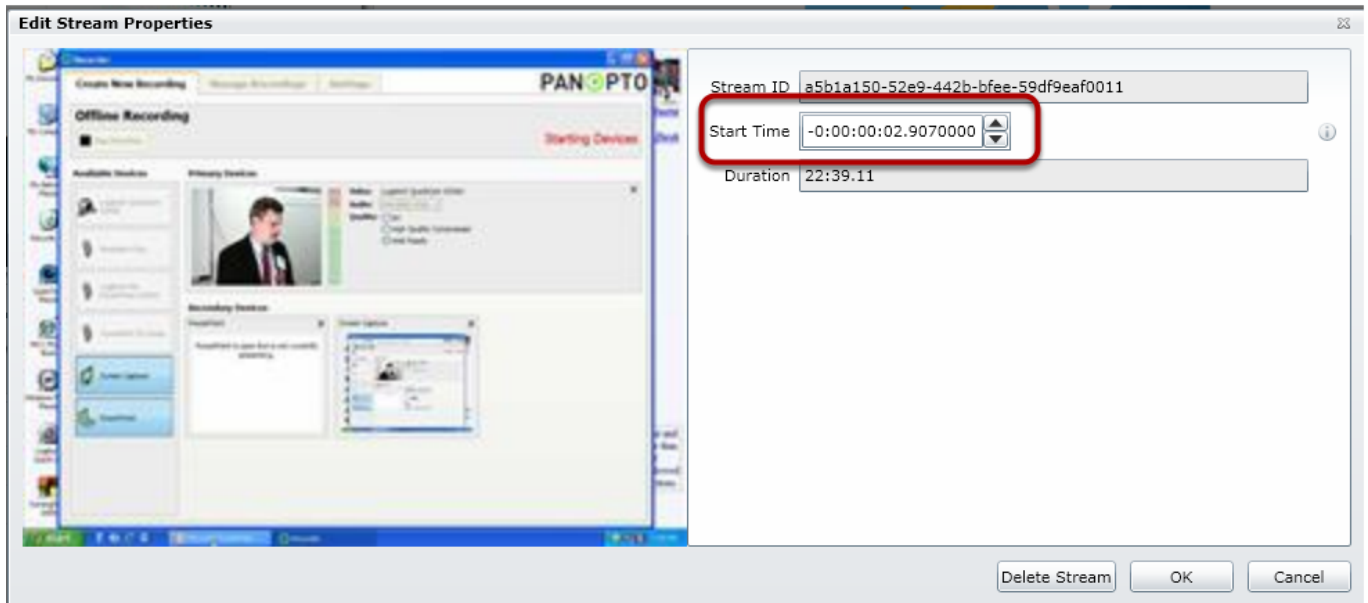
04:13.54

1

Events Streams Segments

| | | |
|----------------------|--------|---------------|
| 00:00.00 - 22:37.53 | DV | |
| -00:02.90 - 22:36.21 | SCREEN | 2 Edit Delete |
| 00:00.00 - 22:37.46 | SLIDES | |

Change the start time as desired and click OK



Creating versions in the Panopto Editor (new in 4.0)

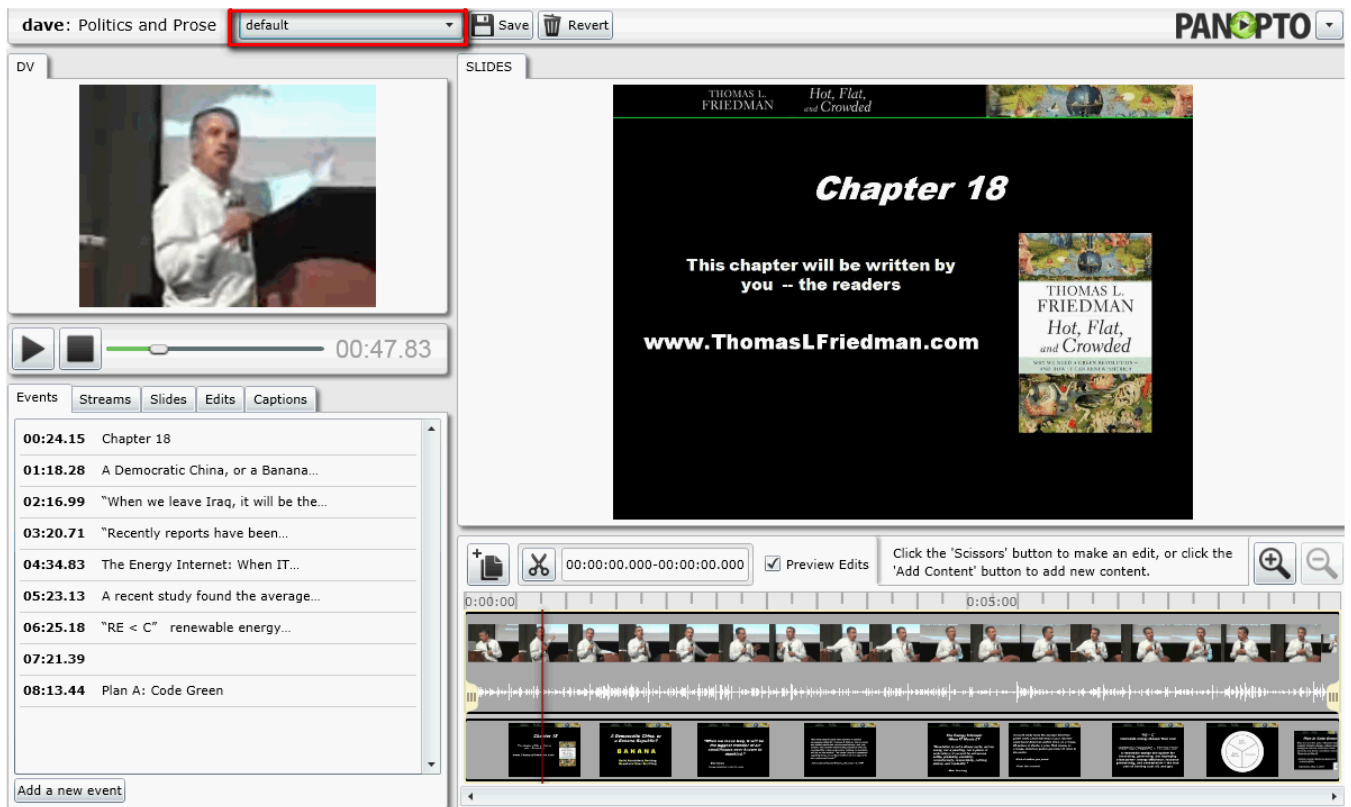
The manage version feature lets you present the same session with different edits that can be distributed to viewers.

For example, if you had a seminar that was split into two halves (for instance, part 1 and part 2) you can use this feature to create a link with only the first part, and a separate link (version) to the second part.

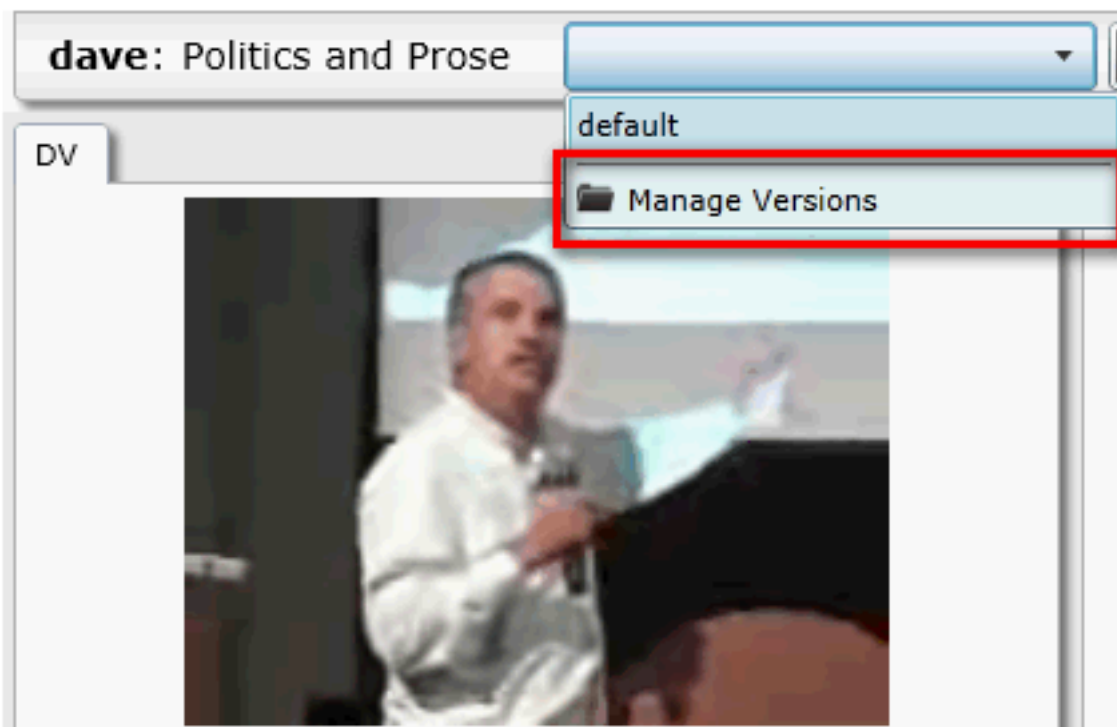
These will appear as individual links in the Panopto Webui.

Important note: To use this feature, you must create a new version first, then edit and save this version.

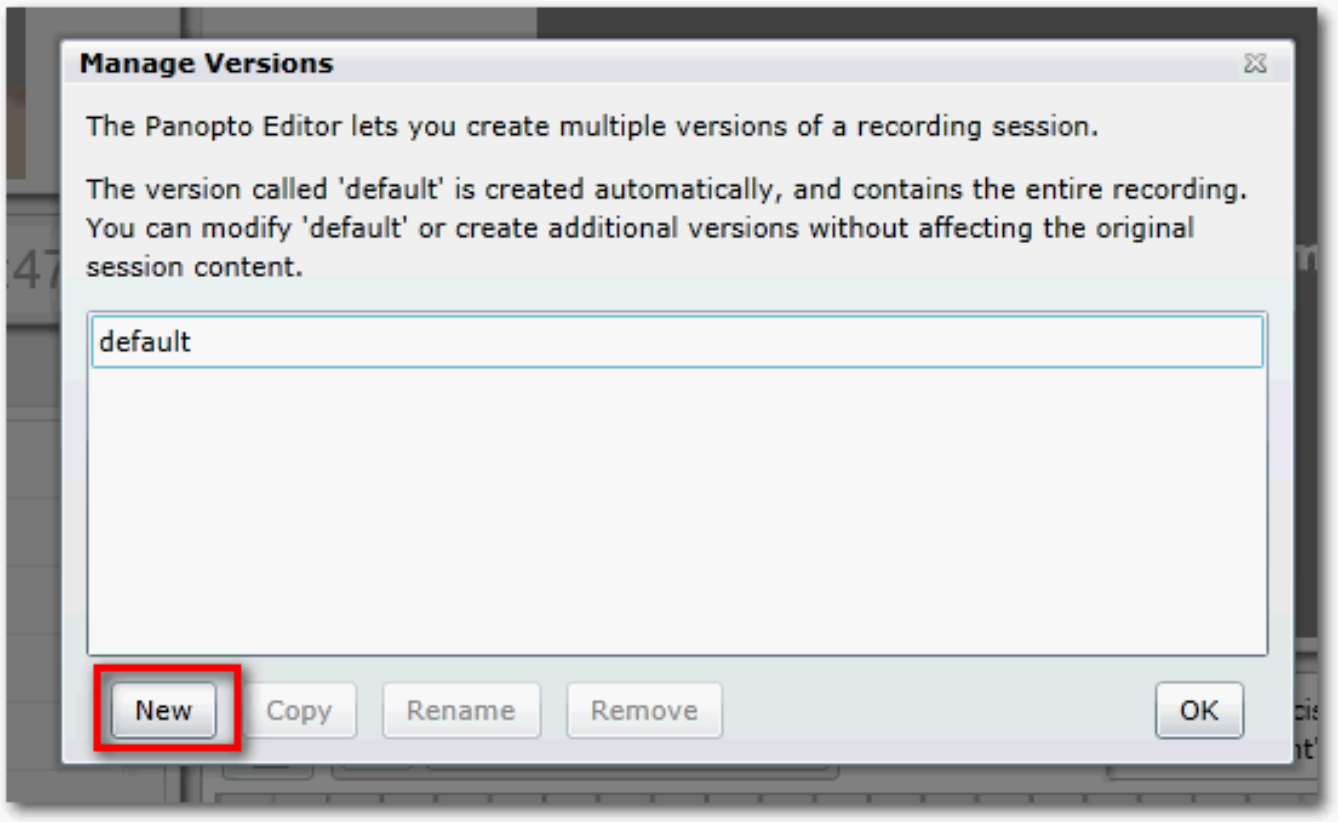
Click the drop down where it says default



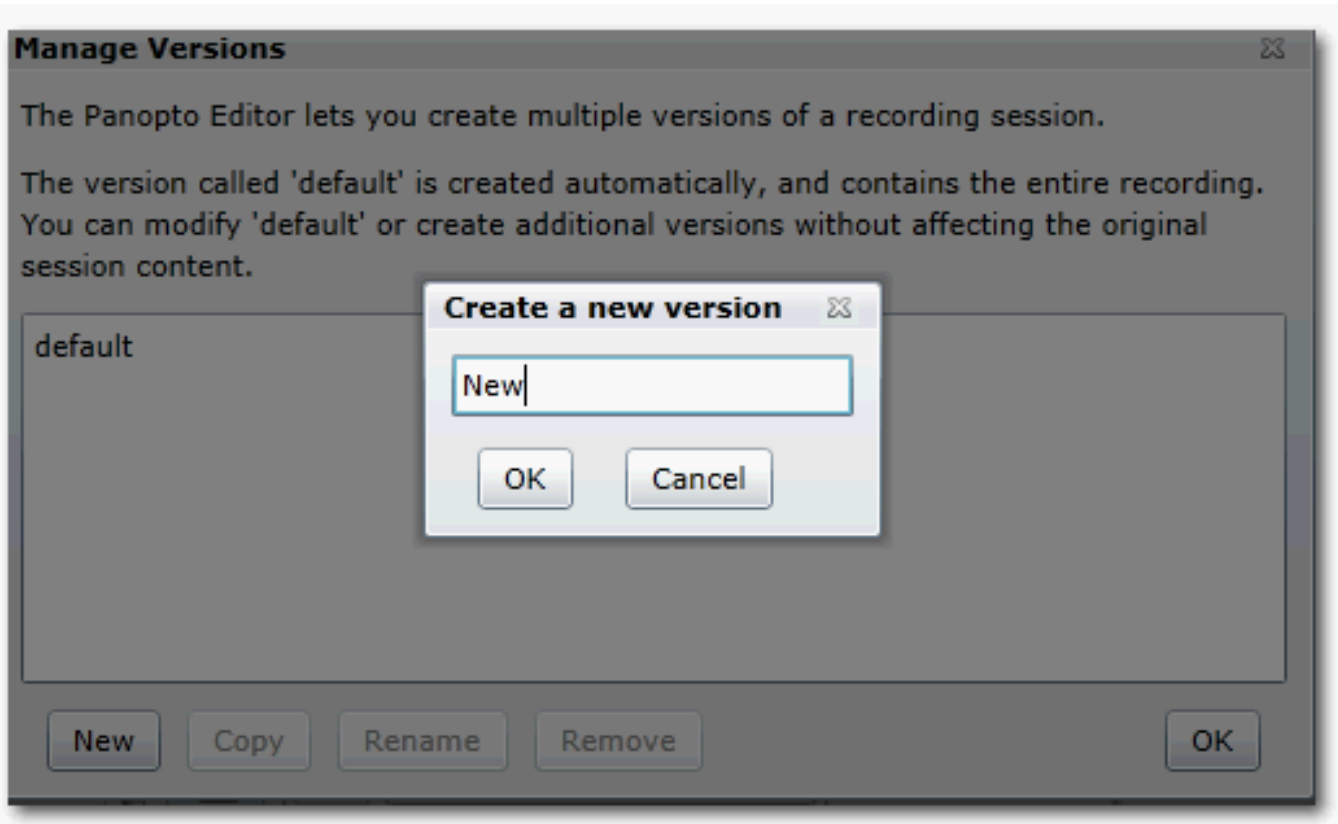
Select Manage Versions



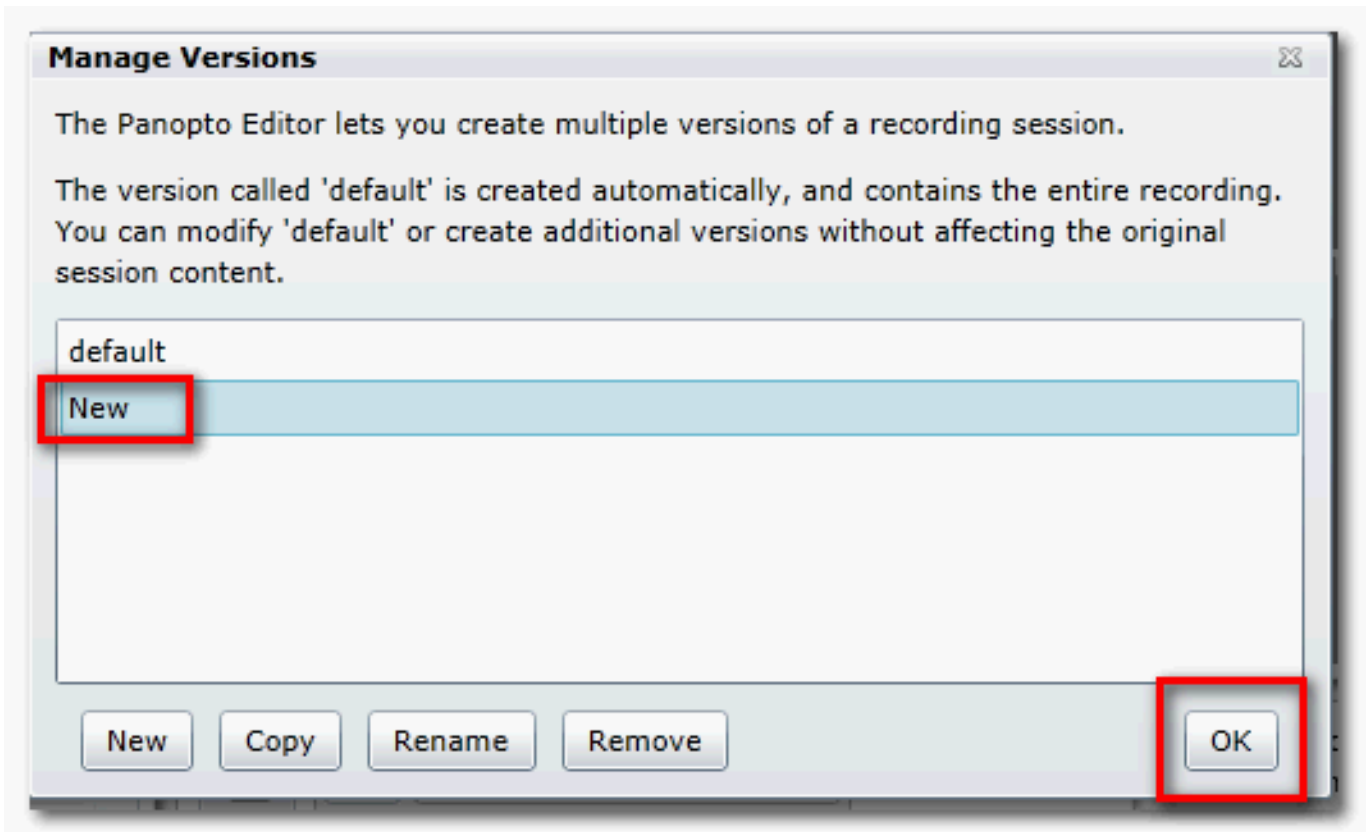
Click New to create a new Edit (useful for creating smaller sections of a long recording)



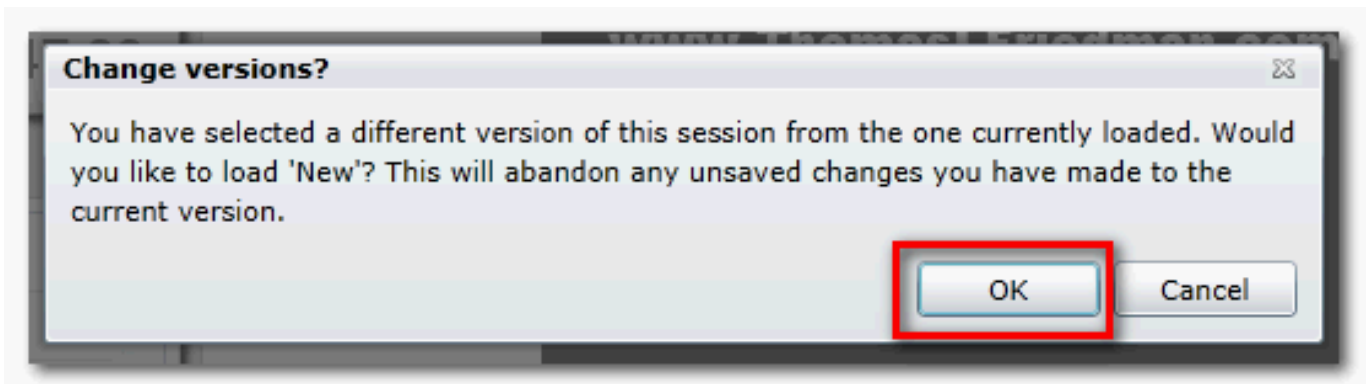
Type in a name and click OK



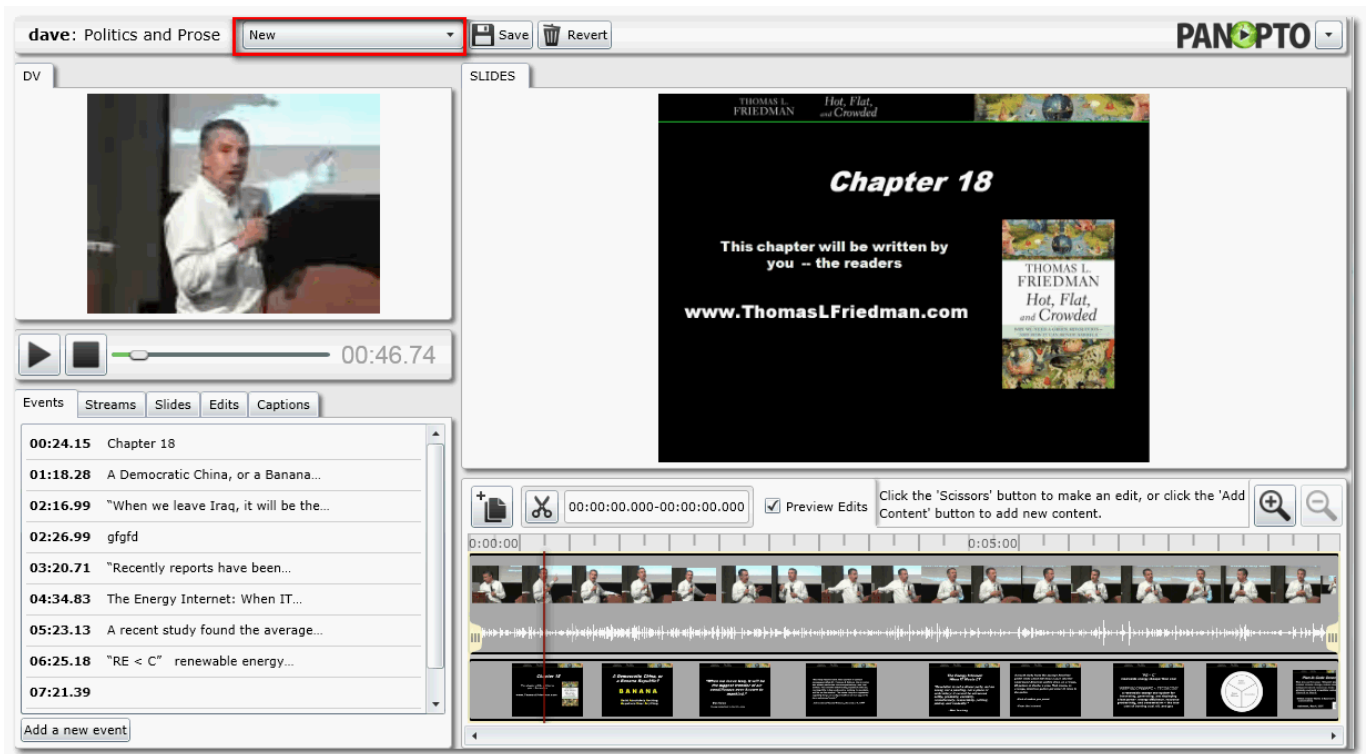
Select "New" and click OK



Click OK on the prompt to change versions (you may receive an additional prompt from your browser)




Any changes that are made will be saved to the new version and not the default




Insert / Edit Captions (new in 4.0)


Now you manually type in a caption stream for your recordings right from the editor. To do this, click on the captions tab - start typing in the text box - press ENTER when you want to add your captions. After saving and committing the captions, these will now be visible in the captions tab in the viewer

*Note: this can also be used to edit captions from a 3rd party vendor

dave: Politics and Prose New 

DV



   04:23.28

Events Streams Slides Edits **Captions**

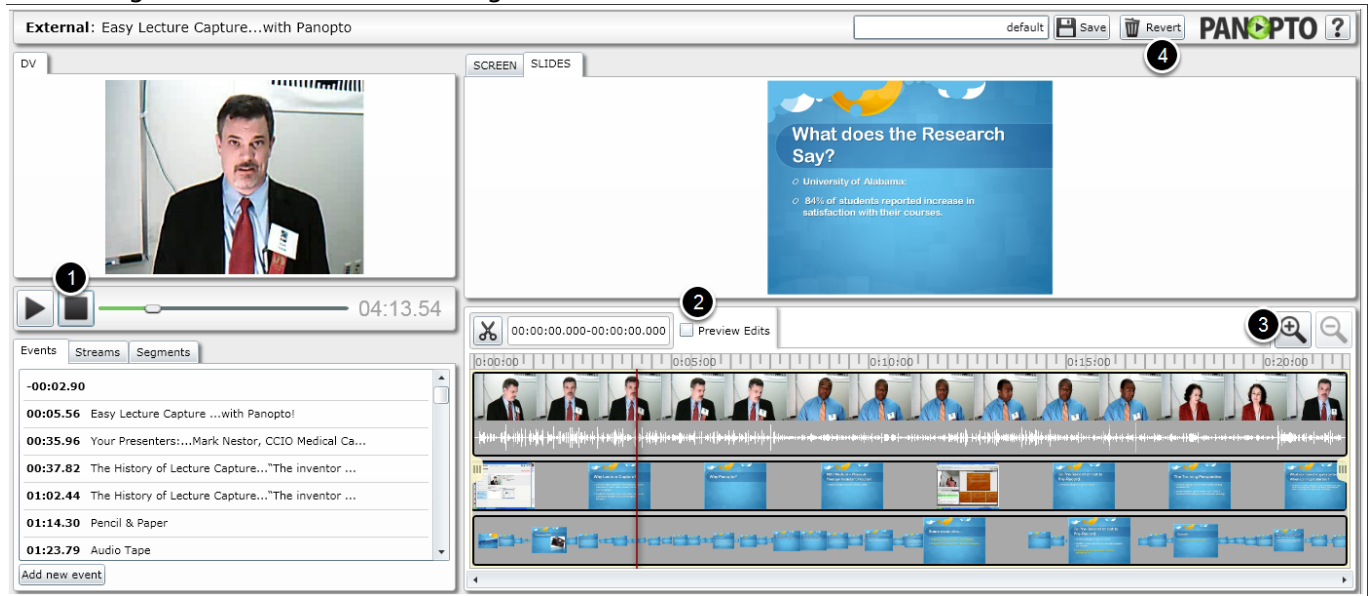
| | |
|-----------------|--|
| 00:42.09 | Chapter 18 - |
| 01:19.91 | Freedom house index for four countries |
| 01:50.07 | Overlaid those results on the price of oil |

Type text below and then press 'Enter' to add a caption at play position, or use the button below to select where to add a caption.

I am manually inserting captions. When I'm done, press ENTER

Everything Else

1. Stop button. Clicking the stop button returns the video back to 00:00
2. Preview Edits. If checked, only the segments of video that are being kept will play
3. +/- controls. This allows you to zoom in/out of the recording
4. Clicking revert will undo all editing that has been done



Satisfied?: -

[Vote up!](#)

- [1]

[Vote down!](#)

- [2]

Points: **-15**

Source URL: <http://support.panopto.com/documentation/editing/advanced-editor-usage-0>

Links:

[1] <http://support.panopto.com/vote/node/296/1/voteUD/thumbs/SRiv2Ots5UOYprUt4LcEthhdzYp7-alDhEIUc52IE9k/nojs>

[2] <http://support.panopto.com/vote/node/296/-1/voteUD/thumbs/HsRYHQbT7v7S7yV4NVxs1ea3VvbOmw2Y2kzS3UaO5SY/nojs>